

# HHS DR Architects / Engineers

## Project Profile

### New Sports Flooring, Student Recreation Center Clarion University

With the temporary closing of the University's Tippin Gymnasium for renovations, this assignment was fast-tracked to allow the Rec Center to accommodate multiple activities and a greater number of students at any given time.

#### Elements

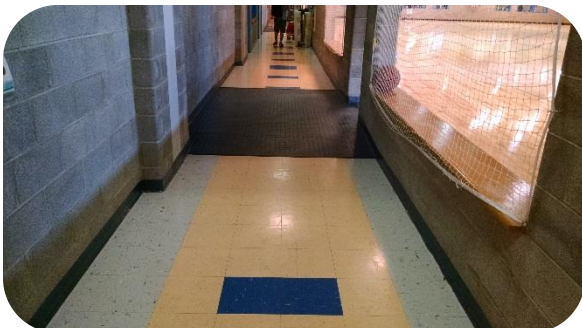
- New wood flooring system was placed over an existing poured synthetic flooring.
- The facility will now have the capability to host not only collegiate sports programs, but also intramural sports and high school tournaments.
- Court markings and graphics are provided to meet NCAA regulations and dimensions.
- Due to increase in elevation of the floor (approx. 2" buildup) ramps were required to provide accessible egress from the space. These were constructed out of Ardex, a resilient flooring material.
- Existing equipment such as basketball hoops, and volleyball inserts were able to be modified to accommodate the buildup of 2".

#### **PROJECT DATA**

CLARION UNIVERSITY  
206 BECHT HALL,  
CLARION, PA 16214

MR. G. CHAD THOMAS,  
DIRECTOR, AUXILIARY  
OPERATIONS  
814.393.1859

CONSTRUCTION COST OF  
\$272,400



[fgargiulo@hhsdr.com](mailto:fgargiulo@hhsdr.com)

724.981.8820 (o)

724.981.4515 (f)

724.699.6402 (c)

[adometakis@hhsdr.com](mailto:adometakis@hhsdr.com)

412.281.2280 (o)

412.281.2334 (f)

724.730.3290 (c)



**HHS DR**  
Architects/Engineers

40 Shenango Avenue, Sharon, Pennsylvania, 16146-1502  
201 Century Building, 130 7th Street, Pittsburgh, Pennsylvania, 15222-3413